



# Is There Evidence of Humans Buried by the Great Flood?

“And God said unto Noah, ‘The end of all flesh is come before me; for the earth is filled with violence through them; and behold, I will destroy them with the earth.’”

*Genesis 6:13*

## A Challenge to Prove All Things

You might encounter some people so stubborn in their rejection of the Bible and God that you expect them to say: “Don’t confuse me with the facts, my mind is already made up!” Jesus alerted us to such a resistant attitude when He said **“If they hear not Moses and the prophets, neither will they be persuaded, though one rose from the dead.”** (Luke 16:31)

However, many others are just confused by the public “disinformation” campaign that has blacked out facts that support a biblical view of creation, the Flood, dinosaurs and ancient man.

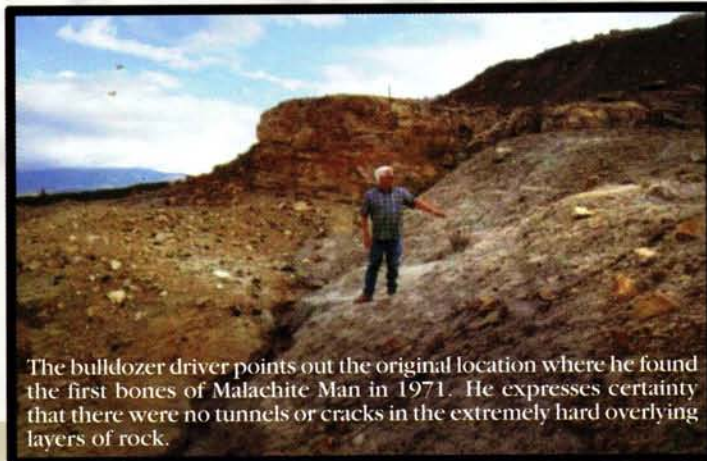
**THINK!** How would people’s thinking be affected by the discovery of truly human bones or sophisticated man-made artifacts found deep in the sedimentary rock layers of earth?

Evolutionists themselves have stated that if only one such verified discovery were made, the whole gradualistic scheme of evolution would be in ruins.<sup>17</sup>

## Human Skeletons Found in Dinosaur Rock Layers

In 1971, a rock collector spotted some bones recently exposed by a quarry bulldozer in hard sandstone near Moab, Utah. Requesting the excavators to pause their earthmoving operation, he brought a university anthropologist, a journalist and photographer to the site. The lower halves of two human skeletons were removed and taken to the university for further study. The rock formation was confirmed to be the same “100 million-year-old sandstone” containing dinosaur bones not far away at the famous Dinosaur National Monument near Vernal, Utah.

Strangely, the bones were never subjected to the technical analysis expected. No scientific report was released to the press, and the discoverer had to reclaim his fossils.<sup>18</sup>



The bulldozer driver points out the original location where he found the first bones of Malachite Man in 1971. He expresses certainty that there were no tunnels or cracks in the extremely hard overlying layers of rock.

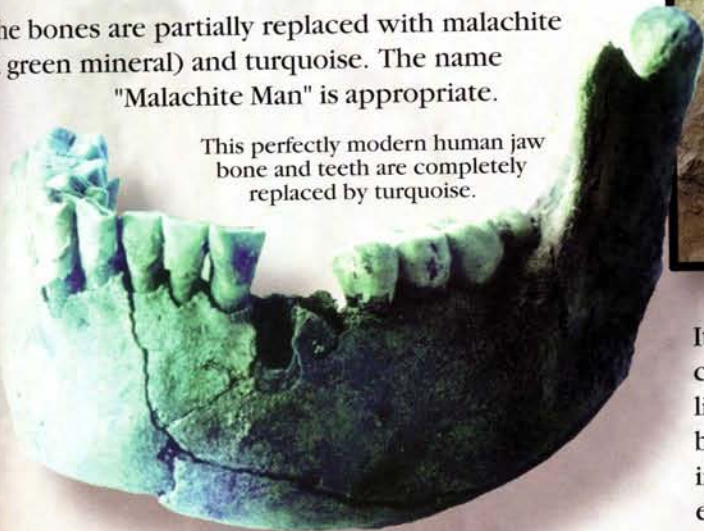
**Think !** Did the location of the human bones scare off the evolutionists and prevent a careful investigation by “establishment” scientists?

# Malachite Man

In 1990, an independent team of researchers, including Dr. Don Patton, excavated further and found more. Thanks to their work, it's now clear that skeletons of ten modern humans were buried under fifty-eight feet of Dakota Sandstone, in an area spanning about 50 by 100 feet. This rock formation is called Lower Cretaceous and is supposedly 140 million years old. At least four of the ten bodies are female. One is an infant. Some of the bones are articulated. Some are not, appearing to have been washed into place. No obvious tools or artifacts were found associated with the bones.<sup>19</sup>

The bones are partially replaced with malachite (a green mineral) and turquoise. The name "Malachite Man" is appropriate.

This perfectly modern human jaw bone and teeth are completely replaced by turquoise.



Some insist this is a mass grave. Think about that! Who would dig a grave up to 54 feet deep through extremely hard sandstone layers? The modern mining operation was halted in the 1970s because the sandstone was so hard it was wearing out the bulldozers.

**These humans and dinosaurs appear to have been buried by the same catastrophic flood!**  
**Humans and dinosaurs must have lived at the same time!**

1971 Excavation: These bones, from two different individuals, a male and a female, were among the first bones found at the site.

1971 Excavation: A close up of these perfectly modern human bones.



It seems obvious that these 10 men, women and children, were buried rapidly by some catastrophe, like a flood. Articulated skeletons indicate rapid burial.<sup>20</sup> Some argue that these people were mining in a cave, when the ceiling collapsed on them. However there are no signs of tunnels. Women and small children would not likely be included in a mining operation. No tools have been found and there are no crushed bones as you would expect if a mine caved in.

1990: These human bones appear to be articulated, but are not. They seem to have been washed into place.

1990: These modern human bones are perfectly articulated, and include the pelvis, thigh bone, knee, shin bones, as well as a fully articulated delicate ankle and foot bones.

You can also see the second leg in the back ground still encased in the rock

